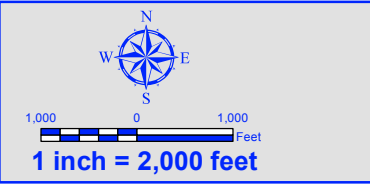
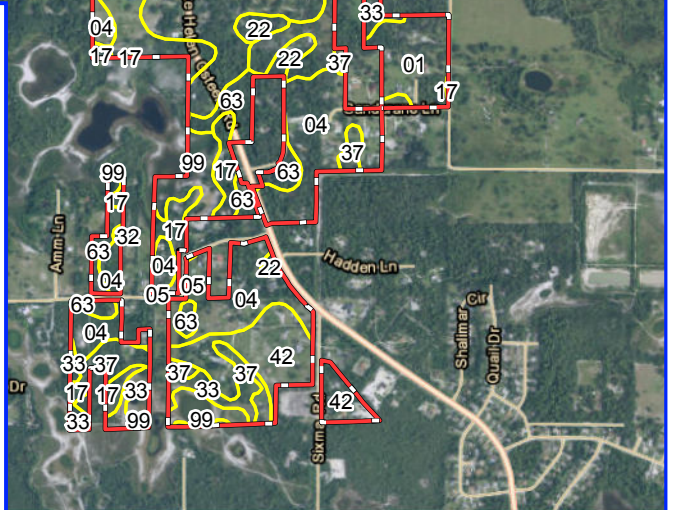


Legend

| | |
|--|--|
| City Limits | 33 - MYAKKA FINE SAND, DEPRESSIONAL |
| Soil Type | 34 - MYAKKA-ST. JOHNS COMPLEX |
| 01 - AOPKA FINE SAND, 0 TO 5 PERCENT SLOPE | 37 - ORNSINO FINE SAND, 0 TO 5 PERCENT SLOPE |
| 04 - ASTATULA FINE SAND, 0 TO 8 PERCENT SLOPE | 42 - PAOLA FINE SAND, 0 TO 8 PERCENT SLOPE |
| 05 - ASTATULA FINE SAND, 8 TO 17 PERCENT SLOPE | 43 - PAOLA FINE SAND, 8 TO 17 PERCENT SLOPE |
| 08 - BASINGER FINE SAND, DEPRESSIONAL | 48 - PLACID FINE SAND, DEPRESSIONAL |
| 13 - CASSIA FINE SAND | 54 - QUARTZIPSAMMENTS, GENTLY SLOPING |
| 17 - DAYTONA FINE SAND, 0 TO 5 PERCENT SLOPE | 56 - SAMSULA MUCK |
| 19 - DELAND FINE SAND, 0 TO 5 PERCENT SLOPE | 60 - SMYRNA FINE SAND |
| 22 - ELECTRA FINE SAND, 0 TO 5 PERCENT SLOPE | 61 - ST. JOHNS FINE SAND |
| 27 - HONTOON MUCKY PEAT | 62 - ST. LUCIE FINE SAND, 0 TO 8 PERCENT SLOPE |
| 29 - IMMOKALEE SAND | 63 - TAVARES FINE SAND, 0 TO 5 PERCENT SLOPE |
| 30 - IMMOKALEE SAND, DEPRESSIONAL | 99 - OPEN WATER |
| 32 - MYAKKA FINE SAND | |



City of Lake Helen
Volusia County, Florida
Soils Map

Project: 1611-1
File: Soils.mxd
Name: City of Lake Helen
PM: Sherie Lindh
Date: February 26, 2016
Created By: J.Wilson

